

## Kenés és beépítés helyzete

Típus: 202A - 302A - 452A

A 202-302-452 (két fokozatú) hajtóművek minden beépítési helyzethez szintetikus olajjal kerülnek feltöltésre



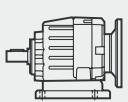
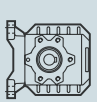
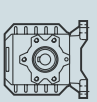
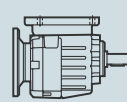
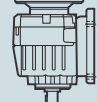
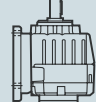
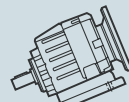
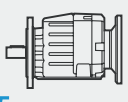
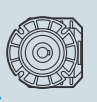
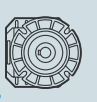
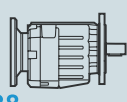
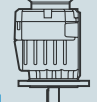


	202A	302A	452A
Minden helyzethez	0.15 lt.	0.15 lt.	0.55 lt.

Típus: 402-3/ 502-3/ 602-3

A 402-3/502-3/602-3 hajtóművek a B3/B5 helyzethez ugyanolyan mennyiségű kenőanyaggal kerülnek feltöltésre.

Amennyiben ettől eltérő a beépítés helyzete, kérjük rendelésében megadni.



Standard							
 B3	 B6	 B7	 B8	 V5	 V6	 V8	
 B5	 B6	 B7	 B8	 V1	 V3	 V8	
Olajmennyiség [ liter ]							
402A	0.25	0.30	0.40	0.40	0.40	0.50	0.40
403A	0.30	0.35	0.45	0.45	0.45	0.55	0.45
502A	0.45	0.55	1.00	1.10	1.10	1.15	1.10
503A	0.75	0.75	1.05	1.15	1.20	1.20	1.20
602A	0.55	0.85	1.10	1.20	1.20	1.25	1.20
603A	0.75	0.90	1.15	1.25	1.30	1.35	1.30

### Radiális és axiális terhelések



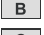





Bővebb információ a katalógusban.

## Magyarázat

$P_{1M}$  [kW] = behajtó teljesítmény ( $n_1=1400 \text{ min}^{-1}$ )

$n_2$  [ $\text{min}^{-1}$ ] = kihajtó fordulatszám ( $n_1=1400 \text{ min}^{-1}$ )

$M_{2M}$  [Nm] = Kihajtó nyomaték

-  = rendelkezésre álló motor perem 
-  = összeépítés csökkentő hüvely segítségével 
-  = kapocsdoboz helyzete 
-  = előnyben részesített áttétel 

Típus	$n_2$ [ $\text{min}^{-1}$ ]	i	$P_{1M}$ [KWV]	$M_{2M}$ [Nm]	f.s.	B 5					B 14					RD		Típus		
						B	C	D	E	F	O	P	Q	R	T				U	V
						63	71	80	90	100 112	56	63	71	80	90				100 112	132
202A	257	5.45	0.55	19.6	2.5						B-C	C						96	202A	
	142	9.85	0.55	35	1.7						B-C	C						96		
	93	15.10	0.37	37	1.6						B-C	C						96		
	66	21.15	0.37	51	1.2						B-C	C						96		
	53	26.31	0.37	64	0.9						B-C	C						96		
	39.0	35.91	0.37	87	0.8						B-C	C						96		
	29.9	46.87	0.25	77	0.9						B-C	C						96		
	22.6	61.89	0.18	73	1.0						B-C	C						96		

Más áttételhez lásd katalógus

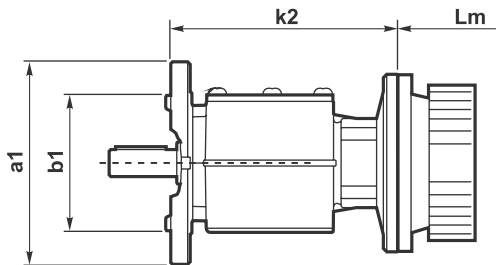
302A	257	5.45	1.5	54	0.9	B							C	C				96	302A
	142	9.85	1.5	97	1.0	B							C	C				96	
	93	15.10	1.1	109	1.0	B							C	C				96	
	66	21.15	0.75	104	1.1	B							C	C				96	
	53	26.31	0.55	95	1.1	B							C	C				96	
	39.0	35.91	0.37	87	1.2	B							C	C				96	
	29.9	46.87	0.37	114	0.9	B							C	C				96	
	22.6	61.89	0.25	101	1.1	B							C	C				96	

Más áttételhez lásd katalógus

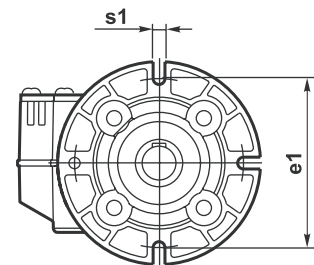
452A	279	5.01	4.0	131	1.5													96	452A
	148	9.45	4.0	248	1.2													96	
	84	16.62	3.0	327	0.9													96	
	70	20.10	2.2	290	1.0													96	
	56	24.98	1.8	303	0.9													96	
	47.6	29.41	1.5	289	1.1													96	
	39.3	35.58	1.5	349	0.9													96	
	31.7	44.22	1.1	319	0.8													96	
23.0	60.90	0.75	299	0.9													96		

Más áttételhez lásd katalógus

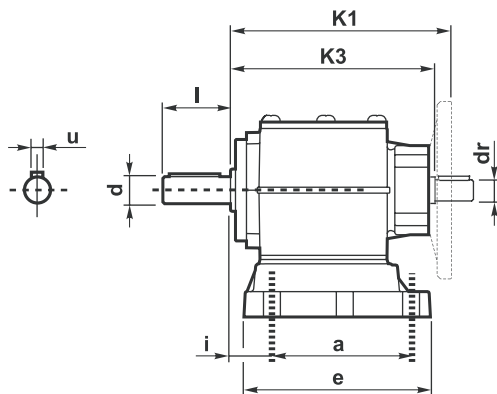
## 2 fokozatú hajtómű méretei



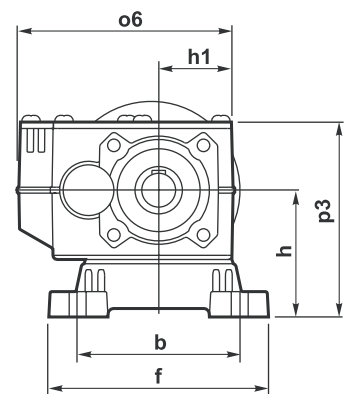
Motor méret	Lm
63	191
71	213
80	237
90	257
100	313
112	332



P... \-F



452	
132 B14	K1= 225
	K2= 238.5



P... \-S

Méret	a1	b1	e1	s1	d ST.	dr	l	u	o6	h1	K1 Max	K2 Max	K3	p3	i	h	a	b	e	f	Láb kód
202A	160	110	130	9	Ø16	Ø14	40	5	130	45	136	139	127	115.5	18	75	110	110	131	130	S1
302A	200	130	165	11	Ø20	Ø19	40	6	130	45	152	155.5	143.5	115.5	18	75	110	110	131	130	
452A	250	180	215	25	Ø30	Ø24	60	8	187.5	76.5	203.5	217	189.3	166.5	30	115	165	135	197	170	S4

Más peremméreték a katalógusban

Más láb méreték a katalógusban



# 402-603 2 fokozat/3 fokozat

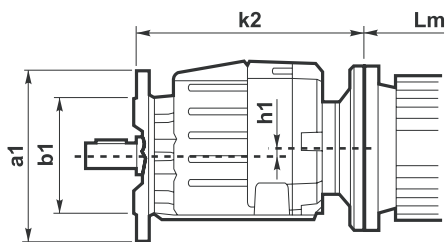
Lehetséges motor peremek

$n_1 = 1400 \text{ min}^{-1}$

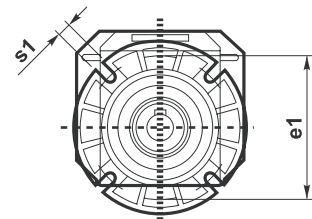
Típus	$n_2$ [min <sup>-1</sup> ]	i	P <sub>1M</sub> [KW]	M <sub>2M</sub> [Nm]	f.s.	B 5					B 14							RD			
						B	C	D	E	F	O	P	Q	R	T	U	V				
						63	71	80	90	100 112	56	63	71	80	90	100 112	132				
<b>2 fokozat</b> <b>602A</b>	148	<b>9.45</b>	5.5	340	1.2		B													96	
	122	<b>11.43</b>	5.5	412	1.0		B													96	
	99	<b>14.21</b>	4.0	372	1.2		B													96	
	84	<b>16.62</b>	4.0	435	1.2		B													96	
	70	<b>20.10</b>	4.0	527	0.9		B													96	
	57	<b>24.61</b>	3.0	483	1.0		B													96	
	56	<b>24.98</b>	3.0	491	0.9		B													96	
	47.6	<b>29.41</b>	2.2	424	1.0		B													96	
	39.3	<b>35.58</b>	1.8	431	1.2		B													96	
	34.6	<b>40.50</b>	1.1	292	1.1		B													96	
	31.7	<b>44.23</b>	1.5	434	1.7		B													96	
	28.6	<b>49.00</b>	1.1	353	1.0		B													96	
	23.0	<b>60.90</b>	1.1	439	1.0		B													96	
<b>3 fokozat</b> <b>603A</b>	18.3	<b>76.69</b>	1.1	535	0.9	B							C	C						93	
	13.4	<b>104.68</b>	0.75	498	1.0	B							C	C						93	
	11.1	<b>126.65</b>	0.55	442	1.1	B							C	C						93	
	8.5	<b>165.29</b>	0.37	388	1.3	B							C	C						93	
	5.8	<b>241.82</b>	0.25	384	1.1	B							C	C						93	
	4.8	<b>292.57</b>	0.25	464	1.1	B							C	C						93	

1/363.63 áttételig lásd katalógus

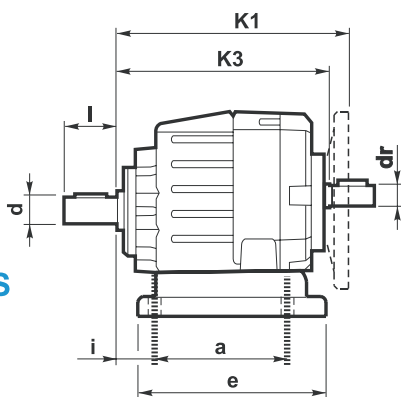
## 2-3 fokozatú hajtóművek méretei



Motor méret	Lm
63	191
71	213
80	237
90	257
100	313
112	332



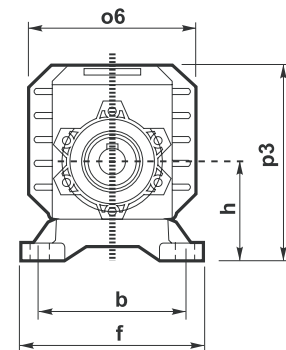
P... \-F



402	
100 B14	K1= 195.5
112 B14	K2= 199.5

502	
132 B14	K1= 255.5
	K2= 264

602	
132 B14	K1= 273
	K2= 282



P... \-S

Méret	a1	b1	e1	s1	d	dr. ST	l	u	o6	h1	K1 Max	K2 Max	K3	p3	i	h	a	b	e	f	Láb kód
<b>402A</b>	200	130	164	11	Ø25	Ø19	50	8	139	7	180.5	184.5	171.3	172	25	90	130	110	153	145	<b>S1</b>
<b>403A</b>						Ø14				3.2	184.5	188.5	175.7								
<b>502A</b>	250	180	215	25	Ø30	Ø24	60	8	178	5.3	237	245.5	220.3	167	30	115	165	135	197	170	<b>S4</b>
<b>503A</b>						Ø19				15	236.5	245	228.5								
<b>602A</b>	250	180	215	25	Ø35	Ø24	70	10	202	21.8	252	260	237.3	218	30	115	165	135	197	170	
<b>603A</b>						Ø19				15.5	255	263.5	245.8								

Más peremméreték a katalógusban

Más láb méretek a katalógusban